

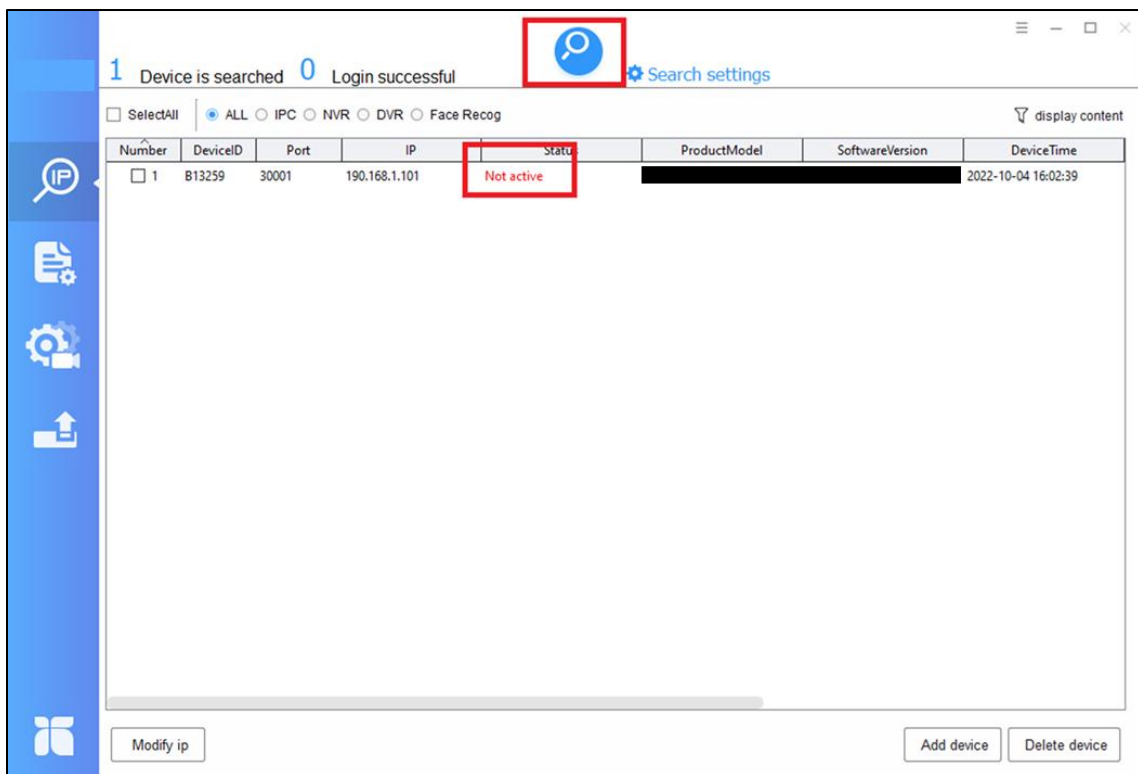
How to activate an IP Camera

Preparation:

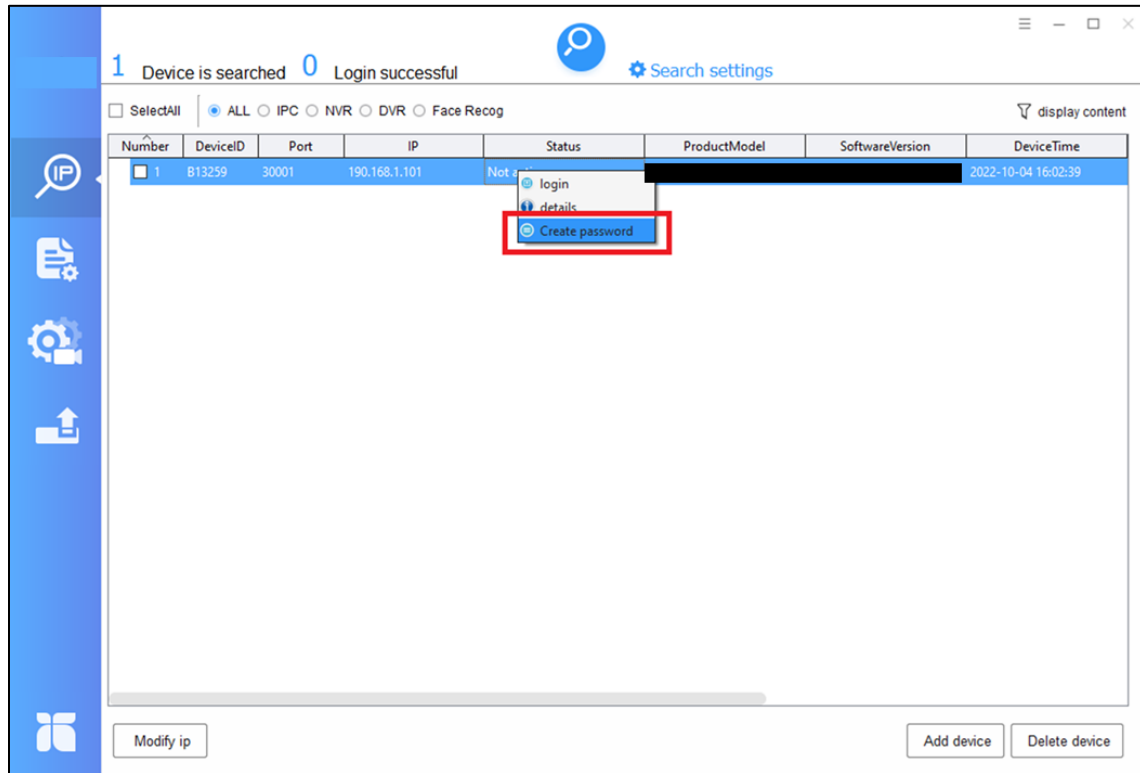
1. Download the Tools software.
2. Ensure that the PC and the camera are on the same network segment.

Activating the IP camera using the Capture Advance Tool

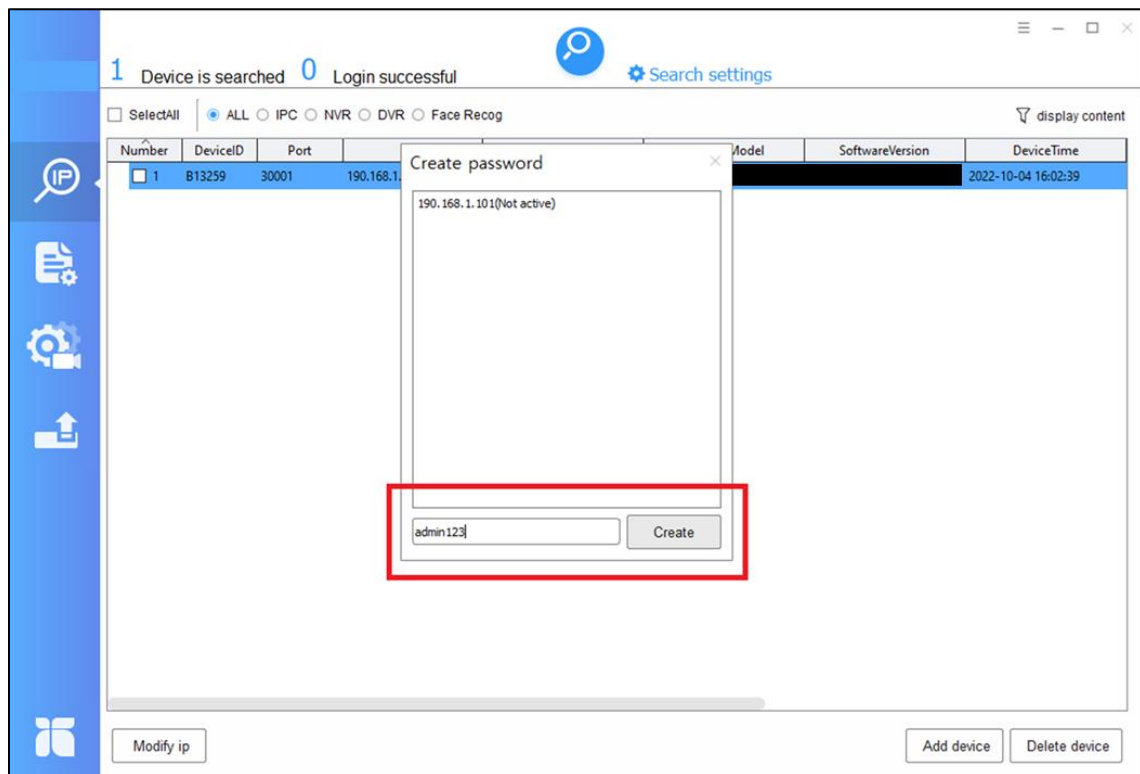
1. Open the Tools software and click the [Search](#) button. By default, the DCHP is turned on, and the IP camera will use whatever IP address is assigned to it wherever it is connected. The camera will show a 'Not Active' status.



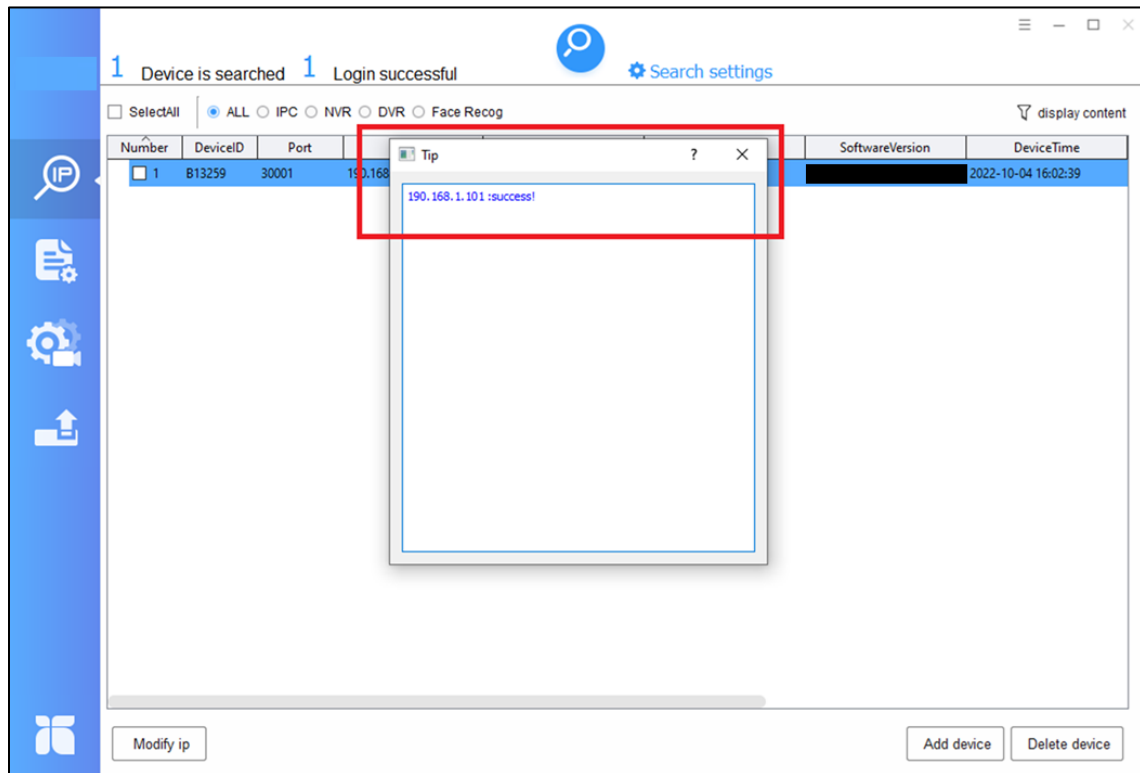
2. Right click on the camera and select [Create password](#).



3. Enter your desired password for the camera and click [Create](#).

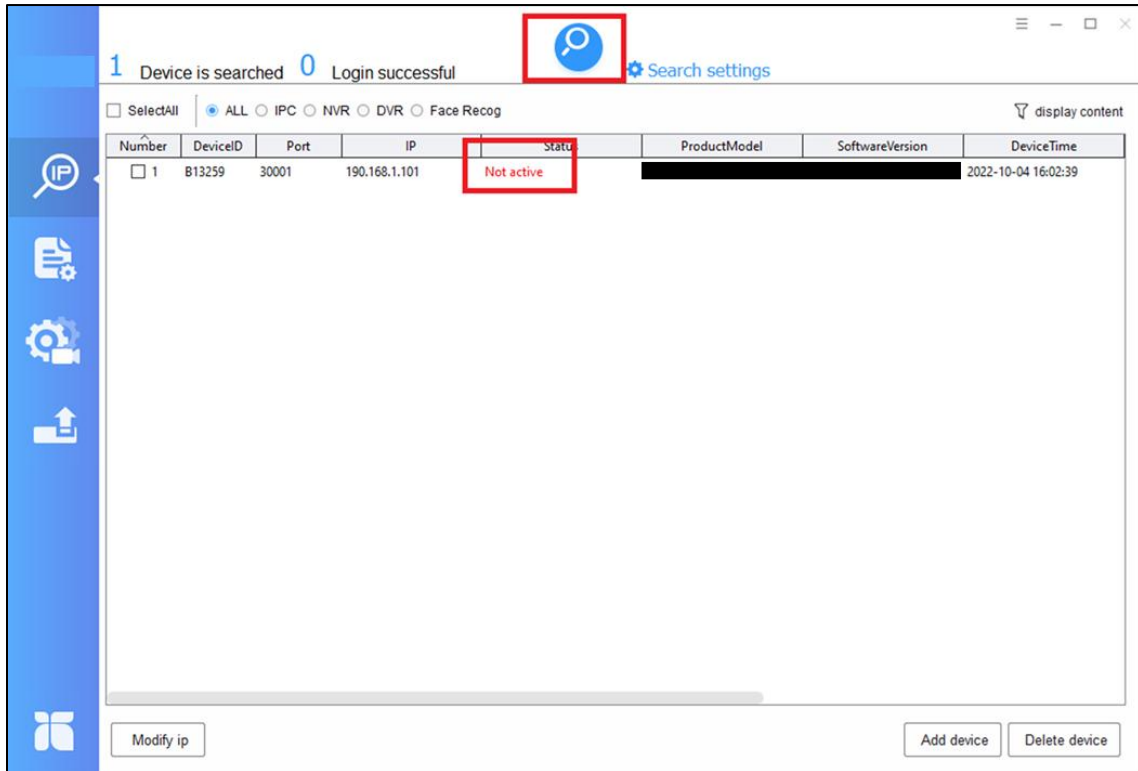


4. After creating the new password, you will get a notice indicating that the password was successfully created. If the result is 'Failed', it can be that the password used does not follow the camera's password requirement or the camera and the PC are not in the same network segment.

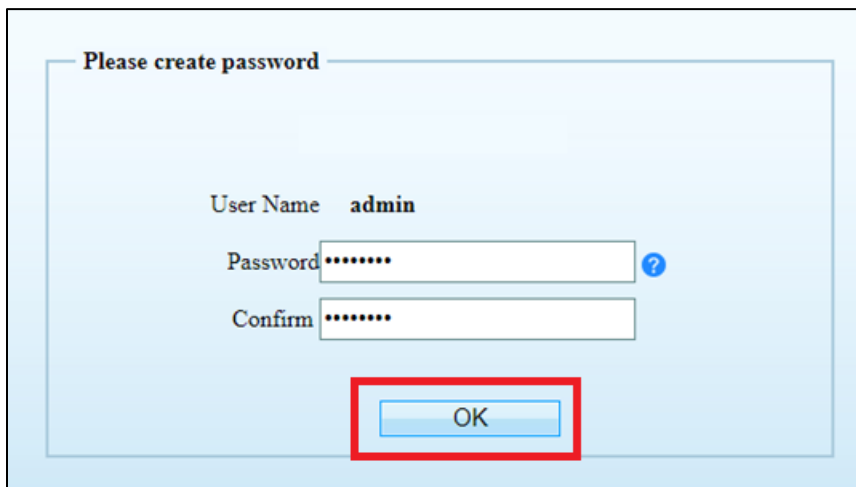


Activating the IP camera using a web browser

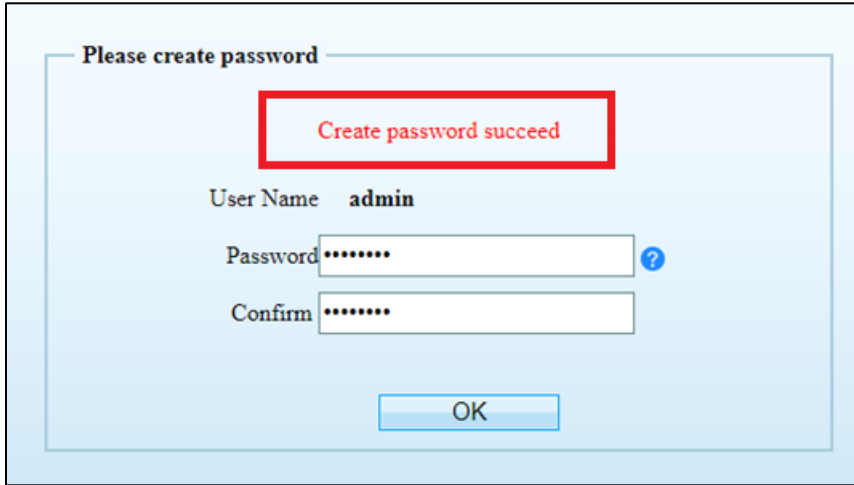
1. Open the Tools software and click the [Search](#) button. By default, the DHCP is turned on, and the IP camera will use whatever IP address is assigned to it wherever it is connected. The camera will show a '**Not Active**' status. You may also try using the camera's default IP address – **192.168.0.120**.



2. Double-click the camera in the Tools software to access it on a web browser. You can also open a browser manually and enter the camera's IP address into the address bar. It will ask to create a password for the IP camera. Enter your preferred password and click [OK](#).



After creating the new password, you will get a notice indicating that the password was successfully created. If the result is 'Failed', it can be that the password used does not follow the camera's password requirement or the camera and the PC are not in the same network segment.



The image shows a light blue dialog box titled "Please create password". At the top, a red-bordered box contains the text "Create password succeed". Below this, the "User Name" is set to "admin". There are two password input fields: "Password" and "Confirm", both containing seven dots. A blue question mark icon is next to the "Password" field. At the bottom center is an "OK" button.